

Mirmola Soraya *Spontaneous Pattern*

September 15 - October 15, 2016



Opening Reception
Thursday, September 15, 2016, 6-8pm



SHIRIN
GALLERY

511 W 25th Street, Suite 507
New York, NY 10001
T: 212 242 4684
www.shiringalleryny.com

FOR IMMEDIATE RELEASE

SPONTANEOUS PATTERN

MIRMOLA SORAYA

September 15 – October 15, 2016

Opening Reception: Thursday, September 15, 6 - 8pm



Souf, kilim

Shirin Gallery NY is pleased to announce an exhibition by **Mirmola Soraya**, *Spontaneous Pattern*. Showcasing the artist's handcrafted carpets, the exhibition explores the concept of carpet-weaving as a contemporary art form. The large-scale works are informed by traditional weaving practices – that of precision and heavy ornamentation – and modern industrialization. Soraya investigates the social and historical role of the weaver, and challenges the definition of craft through the works' form and installation.

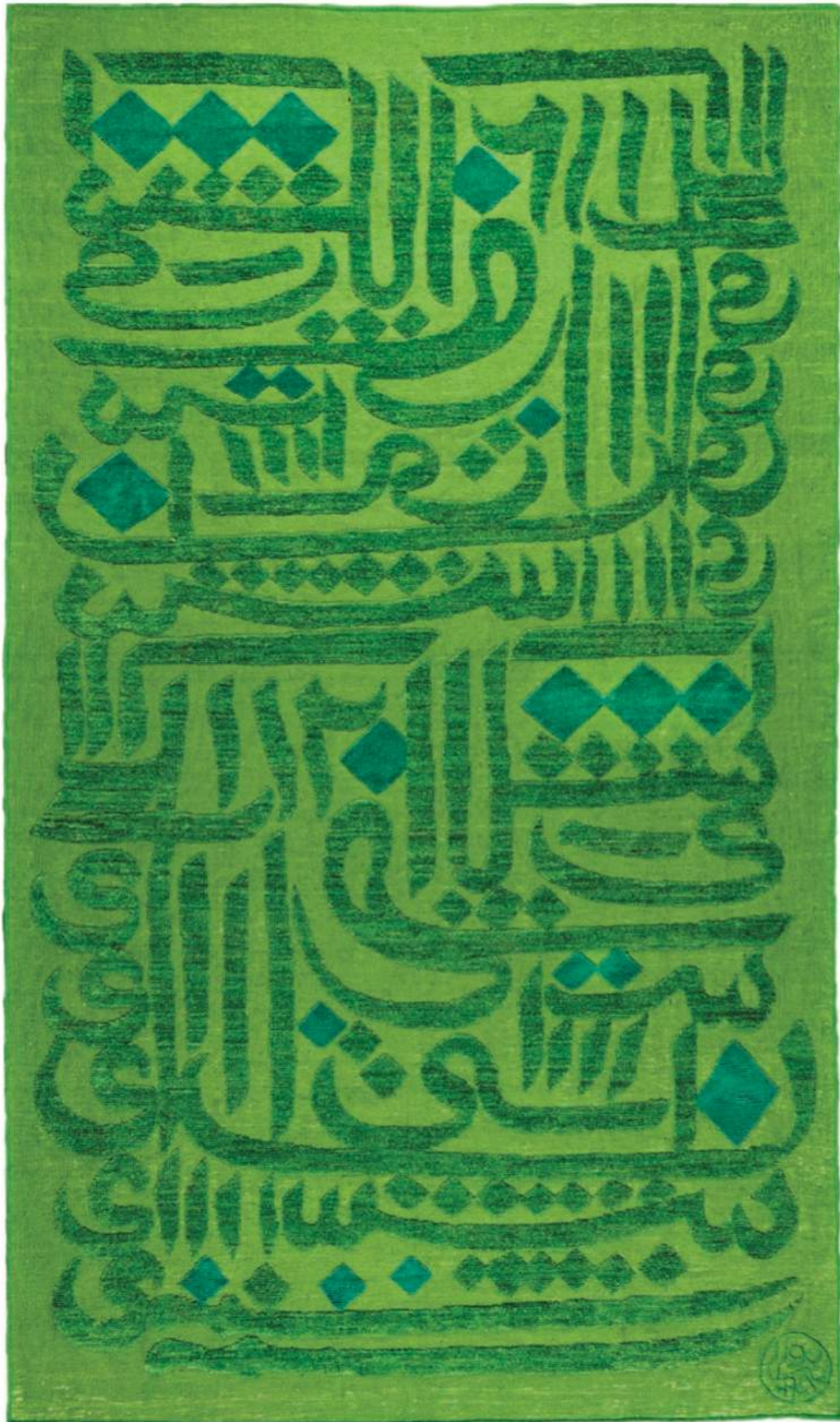
Spontaneous Pattern is a group of Soraya's recent works, each considering the artist's ideas towards both the tedium of the handcrafted object, and the singular imagination of the weaver. In his own words, Soraya explains, "Sometimes my weaved images are rooted in stories long ago, which yet follow me today, and other times in an incident which awaits me in the future, lurking." In many ways, Soraya describes an experience of the weaver much like that of a painter: beginning with the blank canvas. "I look at the weaved and see it as a ground to grow seeds of imagination," he

explains. As such, the work inhabits a sense of whim amongst its order. "Improvisation, spontaneity and intuition of shapes and images," Soraya writes, are what leads to the works' inception.

At the same time, the carpets employ a remarkable level of precision and method in their arrangement. The technique and artistic practice required to produce such works becomes habitual, which is revealed in the unfolding patterns of each piece. Soraya balances the structure of this craft with his own artistic freedom.

Mirmola Soraya (b. 1978, Ramsar, Iran) is a Tehran-based artist and designer. After receiving BA's from both Azad University, Esfahan, and Miras University, Tehran, in Handmade Carpets and Handicraft, respectively, he began exhibiting his work in solo exhibitions throughout Iran, as well as internationally at galleries in cities such as Dubai and Kuwait. He also participated in group exhibitions in Tehran and New York. This is his first solo exhibition in New York.

Shirin Gallery NY is a contemporary art gallery and platform for curatorial and educational activities that seek to foster international cultural exchange. Originally established in Tehran in 2005, the gallery opened a New York space in 2013 in Chelsea's gallery district. The New York space furthers Shirin Gallery's commitment to exhibiting works that push the boundaries of contemporary art, as well as international perceptions of the Middle East.



Mirmola Soraya, *Green Sword with Blue Diamonds*, kilim and carpet, 124 x 73 in, 315 x 185 cm



Mirmola Soraya, *Black Sword on Yellow*, kilim and carpet, 98 x 63 in, 249 x 160 cm



Mirmola Soraya, *Black Pomegranate*, kilim rug with wool, 66 x 94 1/2 in, 240 x 170 cm



Mirmola Soraya, *First Figure (Red)*, kilim and carpet, 120 x 73 in, 305 x 186 cm



Mirmola Soraya, *Green Word on Black*, kilim and rug, 68 x 58 in, 172 x 147 cm



Mirmola Soraya, *Rouyesh/Sapling*, kilim and carpet, 106 x 66 in, 270 x 167 cm



Mirmola Soraya, *Single Pomegranate*, kilim and rug with wool, 59 x 79 in, 150 x 200 cm



Mirmola Soraya, *Souf*, kilim, 100 ½ x 61 ½ in, 256 x 156 cm



Mirmola Soraya, *Runner*, kilim, 143 x 46 ½ in, 363 x 118 cm



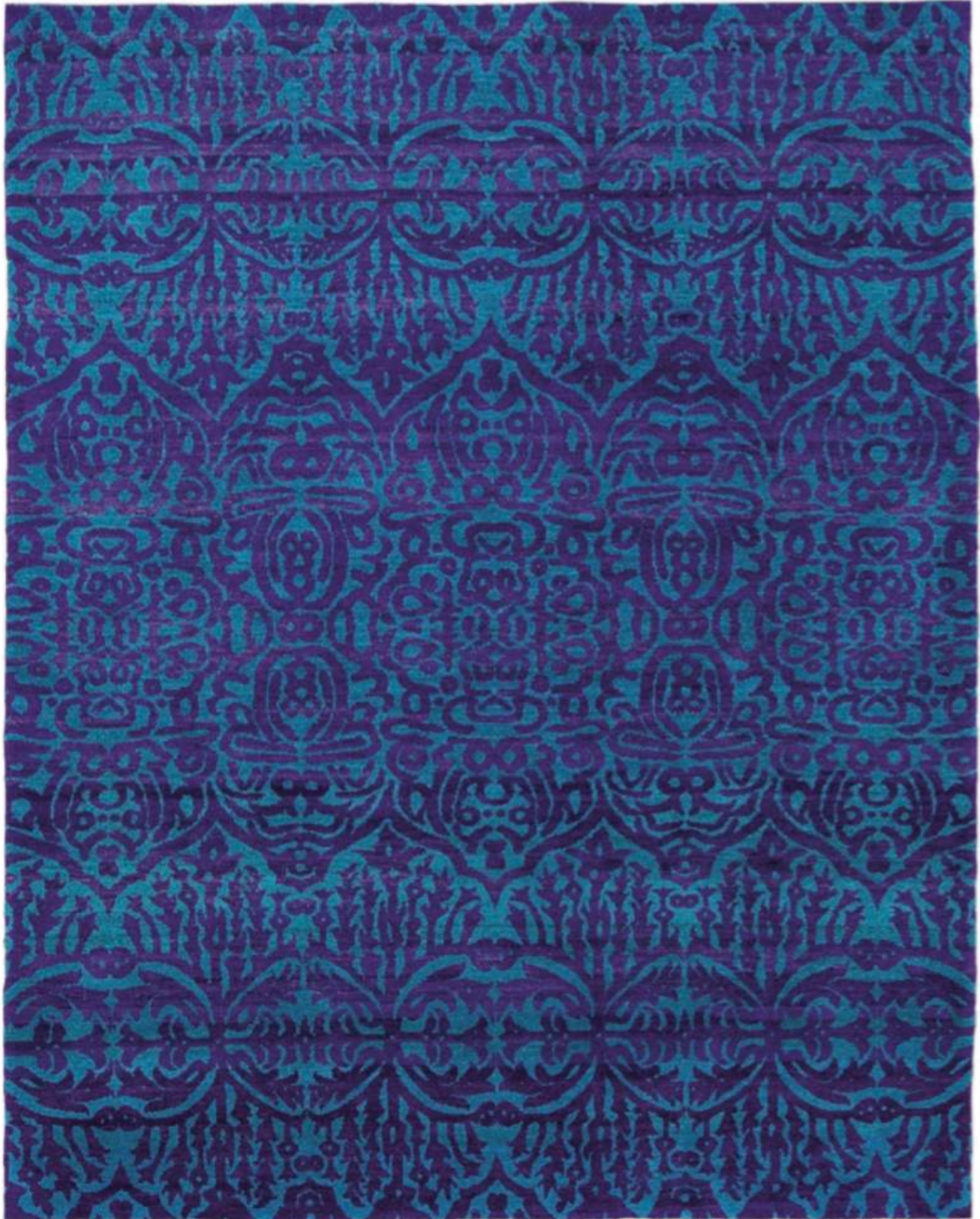
Mirmola Soraya, *Kashkod Darvish*, kilim and carpet, 113 x 79 ½ in, 288 x 202 cm



Mirmola Soraya, *Crowned Tree*, kilim and carpet, 107 1/2 x 64 1/2 in, 273 x 164 cm



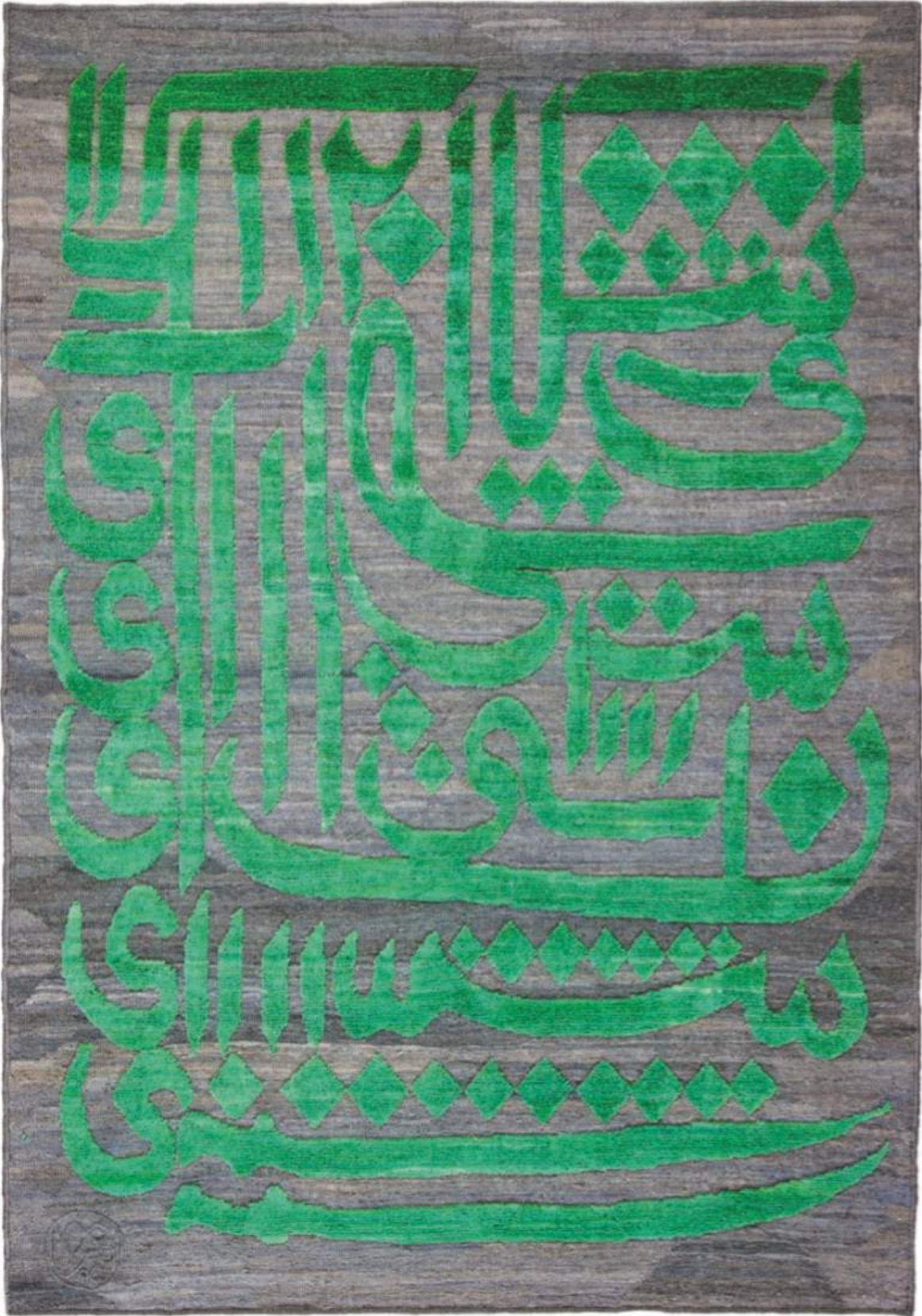
Mirmola Soraya, *Sharar (Yellow)*, carpet, 86 1/2 x 56 in, 220 x 143 cm



Mirmola Soraya, *Sharar (Purple and Green)*, carpet, 76 x 59 in, 194 x 150 cm



Mirmola Soraya, Kilim, 95 1/2 x 32 in, 243 x 81 cm



Mirmola Soraya, *Green Sword on Gray*, kilim and carpet, 86 1/2 x 59 in, 220 x 150 cm



Mirmola Soraya, *Souf*, kilim, 98 1/2 x 59 in, 250 x 150 cm



Mirmola Soraya, *Souf*, kilim, 98 1/2 x 59 in, 250 x 150 cm



Mirmola Soraya, *Souf*, kilim, 108 1/2 x 66 in, 276 x 167 cm



Mirmola Soraya, *Souf*, kilim, 101 x 62 in, 256 x 158 cm



Mirmola Soraya, *Magic Morning (Black)*, kilim and carpet, 126 x 79 in, 320 x 200 cm



Mirmola Soraya, *Persian Garden*, carpet, 142 x 79 in, 360 x 200 cm



Mirmola Soraya, *White Sword with Gold Diamonds*, kilim and carpet, 118 x 79 in, 300 x 200 cm



Mirmola Soraya, Kilim, 98 1/2 x 59 in, 250 x 150 cm



Mirmola Soraya, *First Pattern (Orange)*, kilim and carpet, 106 x 70 in, 270 x 178 cm



Mirmola Soraya, *Souf*, kilim, 98 1/2 x 59 in, 250 x 150 cm



Mirmola Soraya, *Life Sanctuary*, kilim and needle work, 93 x 54 1/2 in, 237 x 146 cm



Mirmola Soraya, *White Pomegranate*, kilim and carpet, 124 x 79 in, 315 x 200 cm



Mirmola Soraya, *Machine of Existence*, kilim and carpet, 138 x 79 in, 350 x 200 cm